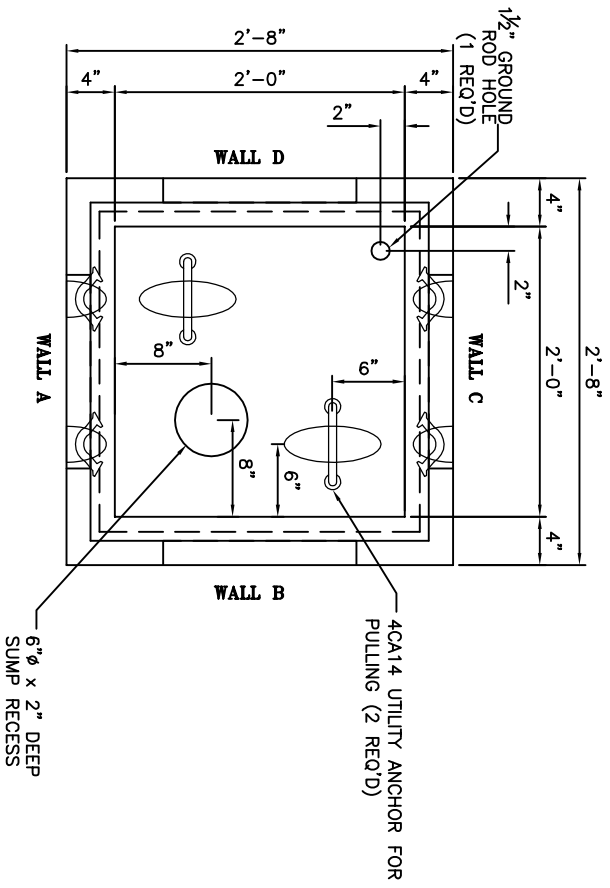


2'-0" x 2'-0" x 2'-6" PULL BOX

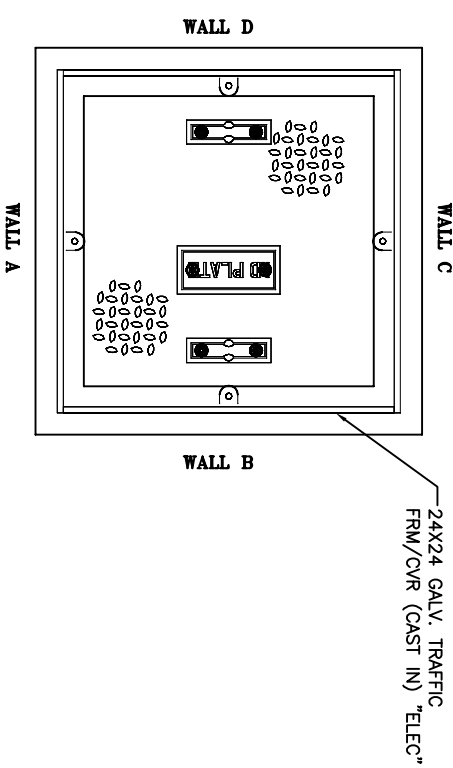
WEIGHT: APPROXIMATELY 1,435 lbs EACH

GENERAL NOTES:

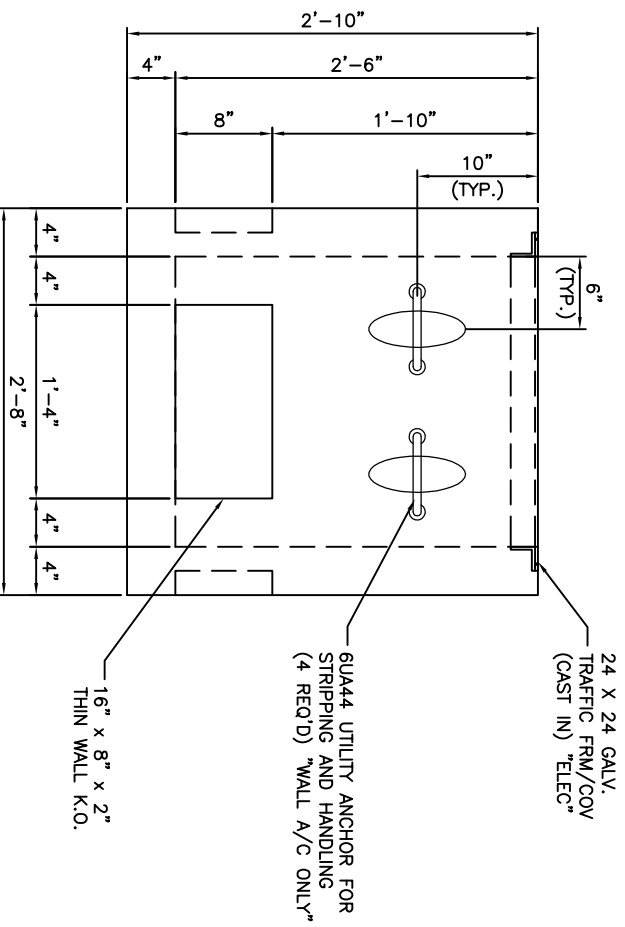
- DESIGN LOAD:** ASHTO H-20-44, CONTINUOUS TRAFFIC (FULL H-20).
- STRUCTURAL CONCRETE:** CONCRETE SHALL BE 6000 PSI MIN. CEMENT SHALL BE ASTM C150.
- REINFORCING STEEL:** REINFORCING STEEL SHALL BE ASTM A-615 GRADE 60UNLESS OTHERWISE NOTED. DIMENSIONS FOR FABRICATED REINFORCING STEEL ARE OUT TO OUT. ALL OTHER DIMENSIONS RELATING TO REINFORCING STEEL ARE TO BAR CENTERS UNLESS OTHERWISE NOTED.
- FINISH OF CONCRETE:** BOTTOM OF BASE SHALL BE A STEEL TROWEL FINISH. ALL OTHER SURFACES SHALL BE AN INDUSTRIAL FORM FINISH.



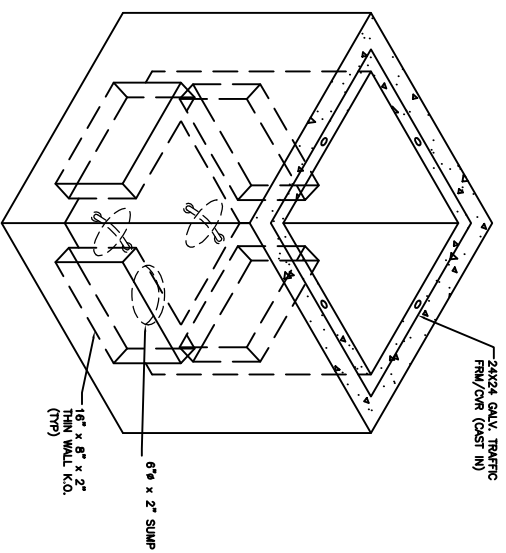
PLAN VIEW
SCALE: 1 1/2" = 1'-0"



PLAN VIEW W/ FRM & CVR
SCALE: 1 1/2" = 1'-0"



ELEVATION VIEW
SCALE: 1 1/2" = 1'-0"



ISOMETRIC VIEW
N.T.S.

APPROVED BY: _____
 COMPANY: _____
 DATE: _____

The drawing and all information contained herein are the property of Waskey Bridge, Inc. and shall remain the property of Waskey Bridge, Inc. until such time as the drawing is returned to Waskey Bridge, Inc. in writing by Waskey Bridge, Inc. in full payment of the drawing fee. The use of this drawing without the written consent of Waskey Bridge, Inc. is prohibited.

PROJECT NAME:	2'-0" x 2'-0" x 2'-6" PULL BOX		
CLIENT:	STANDARD PULL BOX		
CONTACT NAME:	TBD	CONTACT PHONE:	#####
TYPE #:	01	PROJECT #:	#####
DRAWING NUMBER:	01	DATE:	06-19-13

WASKEY
 SINCE 1955 PRECAST CONCRETE PRODUCTS

2651 N. FLANNERY ROAD
 BATON ROUGE, LA 70814
 PH: (225) 926-5762
 FAX: (225) 926-5766
 www.waskey.com

DRWN. BY:	D. GUEDRY	NO.	DATE	REVISION DESCRIPTION	BY
CHD. BY:					
APPR. BY:					
DATE:	06-19-13				